

Pneumatic Impact Wrenches



CODE	Sqare	Drive	Nom. Bolt Diam mm	Free Speed R. P. M	Air Inlet PT	Air Hose Size
	mm	inch				
590101	12.7	1/2	13.0	6,500	1/4	9.5
590105	19	3/4	22.0	4,000	3/8	12.7
590106	25.4	1	32	3,500	1/2	12.7

Pneumatic Hand Drills



CODE	Drilling Capacity mm	Collect Chuck Size mm	Free Speed R.P.M	Air Inlet PT	Air Hose mm
590341	6.5	6.5	2900	1/4	9.5
590342	9.5	10.0	1400	3/8	9.0
590347	13.0	13.0	700	3/4	9.5
590348	16.0	16.0	400	1/4	9.5

Pneumatic Heavy Rotary Drills



CODE	Drilling Capacity mm	Free Speed R.P.M	Air Inlet PT	Air Hose mm
590351	22.0	600	3/8	12.7
590352	32.0	380	1/2	12.7
590353	50.0	160	1/2	19.0

Pneumatic Straight Grinder



CODE	Wheel Size mm	Free Speed R.P.M	Air Inlet PT	Air hose mm
590331A	100	14600	1/4	9.5
590333	150	7600	3/8	12.7

Pneumatic Angle Grinders



CODE	Wheel Size mm	Free Speed R.P.M.	Air Hose mm
590301	100	13600	9.5
590302	180	7500	12.7
590303	230	5900	12.7

Pneumatic Chipping Hammers

Powerful hammers for billet chipping, general chipping and removal of calking weld flux..paint and rust in limited space.



CODE	Type of Shank	Blow per MMinute	Piston Dia mm	Air Inlet PT	Air Hose mm
590361	Round	2600	19.0	3/8	9.5
590362	Hexagon	2300	18.0	1/4	9.5

Pneumatic Scaling Hammers

Suitable for the removal of old paint and rust.



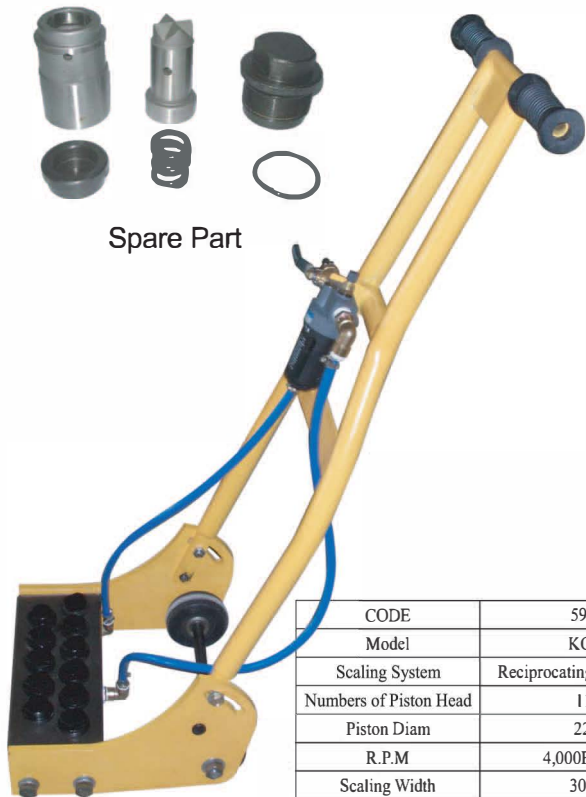
CODE	Model
590381	SC-1
590382	SC-2
590383	MS-3NV
Spare hammer head	
590386	SC-1
590387	SC-1
590388	MS-3NV



Deck Scaler Pneumatic Powered

For use in removing scales and surface paint from the ships deck.

The scaler has a handle, allowing the operator to stand during use, relieving fatigue and protecting the eyes from dust and chipped metal or scale. Required air pressure is 0.59Mpa (6kgf/cm²).



Spare Part

CODE	590401
Model	KC-100
Scaling System	Reciprocating Piston System
Numbers of Piston Head	11pcs
Piston Diam	22mm
R.P.M	4,000Blow/min
Scaling Width	300mm
Weight	65kgs
Name of Mfr	Kobe Cleaner

Deck Scaler



CODE	description
590409	Deck scaler

Pneumatic JET Chisels

For chiseling or smoothing welds, castings and other materials.

Jet chisel needles adjust to the contour of any surface automatically.



JC-16:For light duty	JEX-24:For all purpose
JT-20:For general duty	JEX-66:For heavy duty

CODE	Model	O.A.Length mm	Air Inlet	WT.kg
590461	JC-16	270	3/8"	1.4
590462	JT-20	345	3/8"	2.4
590463	JEX-24	348	3/8"	2.7
590464	JEX-66	360	3/8"	3.5

CODE	Size	Model
590471	2	JC-16
590472	2	JT-20
590473	2	JEX-24
590474	2	JEX-66
590475	3	JT-20
590476	3	JEX-24
590477	3	JEX-66
590478	4	JEX-66



Spare Needles for Jet Chisel

CODE	Needle Diam×Lgth mm	CODE	Needle Diam×Lgth mm
590466	2 ∅ ×150	590468	3 ∅ ×180
590467	2 ∅ ×180	590469	4 ∅ ×180

Pneumatic Hand Scaler

Lightweight and ideal for removing rust, mill scale, old paint.



CODE	590512
Model	KC-20
Free Speed	5,000
No Load Air Consumption	0.7m ³ /min.
Air Hose Size	12.7mm
Air Pressure	6kgf/cm ²
Overall Length	400mm
Weight	5kgs

For Model KC-20

No.	CODE	DESCRIPTION
1	590521	Wire wheel brush
2	590522	LG tool assembly
3	590523	HD tool assembly
4	590524	Hammer head
5	590525	Grind stone

Pneumatic Flux Chippers

For scaling and chipping rust and cleaning metal surface.



CODE	Model	Standard Accessories	Weight
590531	CH-24	1 pc Bent flat chisel, 1 pc Reducer PT3/8"×NPT3/8" 1 pc Hose nipple PT3/8"×3/8"	2 kg

Pneumatic Needle Scalers

Unique needle scaler with integrated anti-vibration system in order to protect the operators hands and arms but not the rust.



CODE	590551
Air Hose Size	1/4" and 3/8"
Model	NP23K
Air Pressure(Max.)	7 Bar
Needle	∅ 2mm×51 pcs ∅ 3mm×19 pcs ∅ 4mm×10pcs
Weight	2.2kgs

Pneumatic Hacksaws

Light duty air operated hand hacksaw. Maximum cutting capacity is up to 3mm thickness of steel



CODE	590571
Model	SSW-110
No Load Stroke Speed	7000/min
No Load Stroke Length	11mm
Weight	0.62kgs
Standard Accessories	2 pcs Hacksaw blade 32 teeth 1 pc Hex.spanner 3 mm 1 pc Bushing PT 1/4×NPT1/4

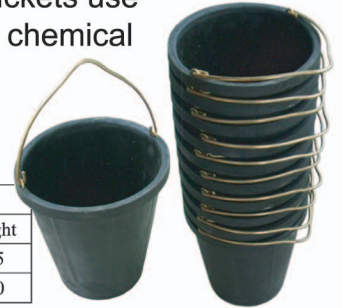
Pneumatic Driven Winches

CODE	Lifting Capacity kg	Lifting Speed (Mtr/Min)	Wire Rope		Air Hose Diam. mm	Weight kg
			Diam. mm	Length mm		
590601	50	35	3	33	15	47
590602	75	35	3	33	15	50
590603	100	30	4	33	15	70
590604	150	25	6	33	19	75
590605	200	30	5	40	12	75
590606	250	20	6	33	25	120
590607	300	30	5	40	12	80



Neoprene Rubber Buckets

made of hard neoprene, specially developed spark proof buckets use when cleaning tanks with chemical or petrpleum cargo.



CODE	Capacity Ltr	Dimensions mm	
		Upper Diam	Height
590611	10	260	335
590612	20	360	350

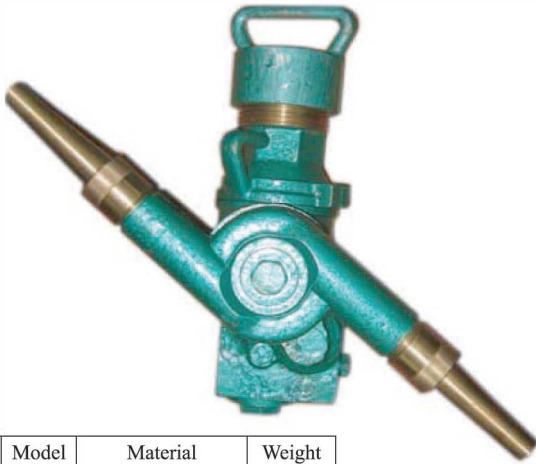
Pneumatic Vacuum Cleaner



CODE	Type	Hose	Air consumption at 5kgf/cm ²	Vacuum
590721	V-300	∅ 25mm×2m(oil resistant)	240 Ltr/min	3000mm
590722	V-500	∅ 32mm×2m(oil resistant)	400 Ltr/min	3000mm

Tank-Cleaning Machines

Equipped with a unique, self start, hydraulic turbine which cleans effectively using the least amount of water.



CODE	Model	Material	Weight
590681	300N	Corrosion-proof	6.7kg
590682	400N	Aluminium alloy	8.3kg

CODE	590651	590652	590653	590656	590657
Nozzle Diam	11 mm	12 mm	13 mm	6-10 mm	8-15 mm
Water Consumption	29m ³ /Hr	34m ³ /Hr	39m ³ /Hr	4-25m ³ /Hr	7-48m ³ /Hr
Jet Length	11.5 mtr	12.5 mtr	14.5 mtr	15-31 mtr	22-36 mtr
Washing Cycle min./ cycle	3.7		4-15		3-12
Working Pressure	10 kgf/cm ²		2-12 bar		

Hold-Cleaning Guns

For Cleaning of bulk carrier holds by a high pressure water stream. A strong stream of water can be projected a distance of over 20 mtrs for the removal of any loose rust, flaking paint.



CODE	590741	590742
Model	Water Today	Hydriflex
Effective Jet Reach	20-25 mtr	30 mtr
Working Pressure	5-7 kgf/cm ²	80-100 psi
Water Consumption	28 ton/hour	300 gal/min
Water Hose	50 mm or 65 mm	2"
Hose Coupling	Nakajima type	instantaneous
Air Hose	15 mm	3/4"
Weight	Gun :4.7 kgs Stand :18 kgs	15kgs

Tank-Cleaning Hose Accessories / Saddles



CODE	Size	Material	Weight	
590671	ASA 2-1/2" 7.5 thread	Cast Bronze	3.3 kg	
590672	ASA 2-1/2" 7.5 thread	Cast Bronze	4.9 kg	
590673	ASA 2-1/2" 7.5 thread	Cast Bronze	1.3 kg	
590674	ASA 2-1/2" 7.5 thread	Cast Alum-Bronze	0.9 kg	
590675	ASA 2-1/2" 7.5 thread	Cast Alum-Bronze	0.8 kg	
590676	O.D.	I.D.	t	Neoprene
	73	51	6	
590677	78	62	4	Neoprene

High-Pressure Cleaners

a compact, handy, highly efficient unit suitable for a wide variety of cleaning jobs with a small amount of water at high pressure

Standard accessories:

10m high pressure hose One jet spray lance
Trigger gun Dirt Blaster

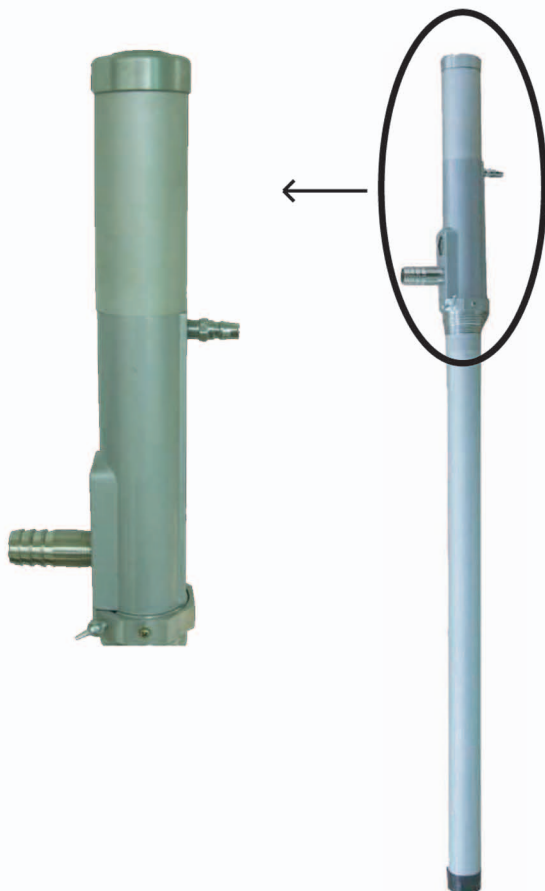


Voltage	Frequency	Working Pressure	Power
440V	60 HZ	200 Bar	8.6 Kw
380V	50 HZ	200 Bar	8.6 Kw

Pneumatic Piston Pump

Air piston pump adopts the theory that “pressure” applying force on various areas and can produce various “acting force”, the pump takes the origin that the compressed air is compressed energy and transforms the pressure of compressed air into more fluid pressure, pressing fluid move in order to achieve the aim of high viscosity and ultra - viscosity fluid.

When pump is applied force downward and moves the lower check valve is closed, the fluid in the pump is extruded and charges upward out of upper check valve, then flows into upper pump chamber, because that the piston has volume, some fluid flow out of outlet due to the reduce of spatial fluid volume in upper pump chamber. When piston pump is applied force upward and moves, the lower check valve is opened, the fluid of upper pump chamber flows out of outlet when piston runs upward.



Discharge	Max Pressure	Working Pressure	Outlet	Net weight
>50L/min	0.7MPa	0.3-0.5MPa	3/4"	5kg

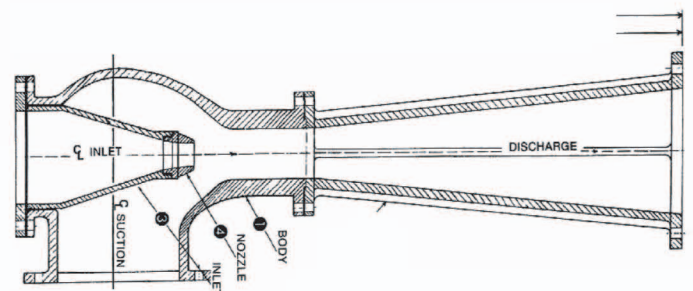
591661

Pneumatic piston pump complete with drum joint & pipe for drum can

Portable Ejectors



Used for indispensable on bulk carriers, lube - oil tankers and chemical carriers where it is essential to empty tanks completely. Also are useful on mopping up the last few barrels of liquid from tanks, holds cofferdams or other compartments.



CODE	Type	Hose connections			Dimension	
		A	B	C	L	H
591676	1×1×1-1/2	1"	1"	1-1/2"	47cm	10cm
591677	1-1/4×1-1/4×2	1-1/4"	1-1/4"	2"	55cm	12cm
591678	1-1/2×1-1/2×2-1/2	1-1/2"	1-1/2"	2-1/2"	70cm	14cm

Cordless Drill Drivers

Designed for continuous use and easy service. Compact and lightweight for increased maneuverability



CODE	590905		
Nominal Capacity	10mm(3/8")		
Drilling Capacity mm	Steel	10	
	Wood	15	
Chuck Size	UNF 3/8		
No Load Speed R.P.M	1100/320		
Voltage	9.6		

Portable electric drills



For 16.0 mm

For 10.0-13.0 mm

Cordless Impact Wrenches

For fast tightening or loosening of bolts. Compact and well-balanced design for positive control



CODE	590925
Square Drive	1/2"
Torque kg.m	1200
No Load Speed R.P.M	0-1500
Stroke	0-2300
Voltage	12V

Designed for precision and reliability for marine and industrial use. To be used for all conventional drilling of steel or wood.

AC 110V Single Phase		AC 220V Single Phase	
CODE	Drilling Capacity mm	CODE	Drilling Capacity mm
591002	10.0	591012	10.0
591003	13.0	591013	13.0
591004	16.0	591014	16.0

Electric Angle Grinders

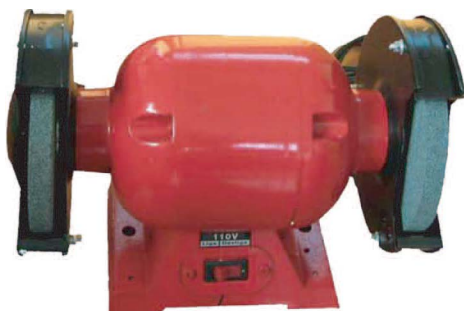
Especially designed for continuous heavy duty work for all grinding applications



AC 110V Single Phase		AC 220V Single Phase	
CODE	For Wheel Diam	CODE	For Wheel Diam
591021	100mm	591031	100mm
591022	125mm	591032	125mm
591023	150mm	591033	150mm
591024	180mm	591034	180mm

Electric Bench Grinders

For sharpening tools and other appliances. according to safety measures, the grinding must be fitted with a wheel cover and must be firmly secured to a bench sand



AC 110V Single Phase		AC 220V Single Phase	
CODE	For Wheel Diam	CODE	For Wheel Diam
591051	150mm	591056	150mm
591052	205mm	591057	205mm

Electric Die Grinders

For precision grinder.



AC 100V Single Phase			AC 220V Single Phase		
CODE	For Collet Diam	Maximum Wheel Diam	CODE	For Collet Diam	Maximum Wheel Diam
591072	6 mm	32 mm	591076	6 mm	32 mm

Electric Sheet Sanders

Ideal for direct material finishing or sanding painting surfaces.



AC 110V Single Phase		AC 220V Single Phase	
CODE	Sanding Area mm	CODE	Sanding Area mm
591081	114×280	591082	114×280

Electric Circular Saws

Blade guard operates automatically in all positions.
Easily adjustable for depth cut and mitre.



AC 110V Single Phase		AC 220V Single Phase	
CODE	Blade Diam	CODE	Blade Diam
591141	160mm	591142	160mm
591144	185mm	591145	185mm

Electric Sheet Planers

For smoothing and planing wood surfaces.



AC 110V Single Phase		AC 220V Single Phase	
CODE	Planing Width	CODE	Planing Width
591136	82 mm	591137	82 mm

Electric Jig Saws

Used for sawing wood, plastic, mild steel plate, etc.
Able to cut either straight or curved lines without wrapping the surface.



AC 110V Single Phase		AC 220V Single Phase	
CODE	Cutting Capacity	CODE	Cutting Capacity
591171	60 mm	591172	60 mm

Electric Rod Cutters

For cutting steel rods, pipes and angle iron, etc.



AC 110V Single Phase		AC 220V Single Phase	
CODE	Wheel Diam	CODE	Wheel Diam
591151	305 mm	591156	305 mm
591152	405 mm	591157	405 mm

Electric Blowers

Lightweight with high air pressure and displacement. Capable of vacuuming dust.



AC 110V Single Phase		AC 220V Single Phase	
CODE	Air Volume	CODE	Air Volume
591181	2.3 m ³ /min	591182	2.3 m ³ /min

Electric Scaling Machines

A rugged but lightweight electric scaling machine for continuous heavy duty use. An ideal unit for derusting and descaling jobs. Portable, fitted with wheels.

Model	KC-50
HP	3/4
Kw	0.55
Voltage(V)	110/220
Working Rotating Speed(R.P.M)	3700
Weight kgs	48



CODE	Voltage	Model
591217	AC 110V	KC-50
591218	AC 220V	KC-50

Pneumatic Scaling Machines

A light and easy to handle, but rigidly constructed tool for efficient heavy duty scaling. Required air pressure is 0.59Mpa (6kgf/cm²).



CODE	Model	Max.Air Consumption m3/min	NO Load Speed R.P.M	Weight kgs
591251	KC-60	0.8	5,000	40

Accessories for Scaling Machines

These accessories differ from manufacturer to manufacturer.

Illustration		
Part No Name	No.1 HD Tool No.1-1 Cutter No.1-2 Disc Pin No.1-3 Center Bolt & Nut No.1-4 Disc	No.2 LG Brush No.2-1 LG Blade No.2-2 Disc Pin No.2-3 Center Bolt & Nut No.2-4 Disc

Illustration		
Part No Name	No.3 Cup Brush	No.4 Hammer No.4-1 Hammer Blade No.4-2 Disc Pin No.4-3 Center Bolt & Nut No.4-4 Disc No.4-5 Collar No.4-6 Washer
Illustration		
Part No Name	No.5 Wire Wheel Brush	No.6 Grind Stone

Flexible Shafts and Tubes for Scaling Machine

Air-Line-F.R.L. Combinations

For use in compressed air filtration, regulation and lubrication.



CODE	Connection thread	Set pressure range Mpa	Flow Ltr/Min
590831	1/4	0.05-0.85	1.0
590832	3/8	0.05-0.85	1.0
590833	1/2	0.05-0.85	1.0
590834	3/4	0.05-0.85	1.0
590835	1	0.05-0.85	1.0

Air-Line-Lubricators

CODE	Connection Thread	Min flow Ltr/min
590811	1/4	30
590812	3/8	40
590813	1/2	50
590814	3/4	190
590815	1	190



Air-Line-Pressure Regulators

CODE	Connection Thread	Set pressure range Mpa
590821	1/4	0.05-0.85
590822	3/8	0.05-0.85
590823	1/2	0.05-0.85
590824	3/4	0.05-0.85
590815	1	0.05-0.85



CODE	Connection thread	Pressure
590801	PT 1/4	1.0Mpa
590802	PT 3/8	1.0Mpa
590803	PT 1/2	1.0Mpa
590804	PT 3/4	1.0Mpa
590805	PT 1	1.0Mpa

Electric Portable Ventilation Fans

Highly efficient and portable. Used to ventilate hot air and harmful gases from a tank or work area, and supply fresh air and oxygen. The ideal bell-mouth type casing is highly efficient, creates little noise and is easy to install in an air duct.



AC 100 volt ± 10%		AC 200 volt ± 10%	
CODE	Case Diam	CODE	Case Diam
591401	200mm	591406	200mm
591402	280mm	591407	280mm
591403	400mm	591408	400mm
		590419	500mm

Portable Ventilation Fans Explosion Proof

Lightweight and robust, non-sparking type electric driven fan. Equipped with an explosion proof switch and 5 meters of cable.

CODE	591416	591417	591418	591419
Casing Diam	200 ϕ		282 ϕ	
Voltage	AC-100V	AC-200V	AC-100V	AC-200V
Phase	Single		Single	
R.P.M	3000/3600		3000/3600	
Air Volume	20M ³ /min		70M ³ /min	
Pressure	25mm/Aq		30mm/Aq	
Weight	14.5kgs		25kgs	



Ventilation Tubes for Explosion Proof Ventilation Fan



CODE	Size	Suitable Model
591421	200 ϕ x P150 x 5 mtr	200 mm Case Diam.
591422	250 ϕ x P150 x 5 mtr	250 mm Case Diam
591423	300 ϕ x P150 x 5 mtr	300 mm Case Diam
591424	400 ϕ x P150 x 5 mtr	400 mm Case Diam

Pneumatic Portable Ventilation Fans

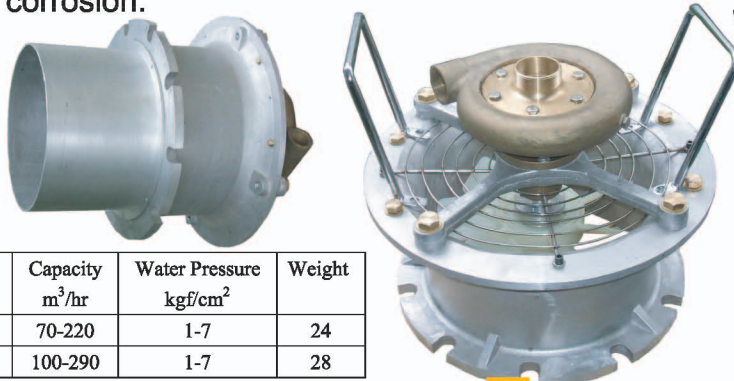
Compressed air driven ventilators that can be used with or without a duct in hazardous areas such as cooling tanks or hatches. Provides ventilation of gas, paint fumes and other hazardous fumes.



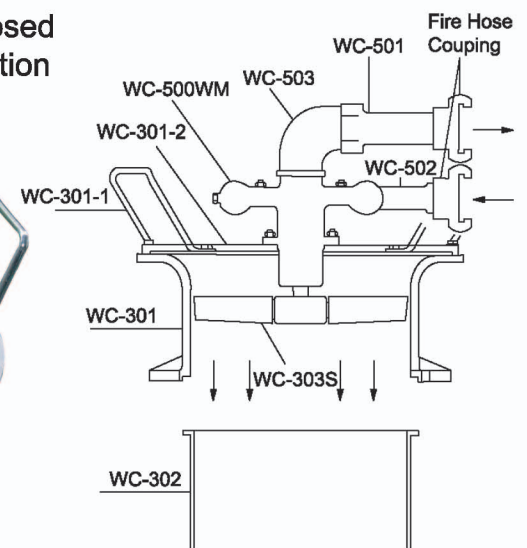
CODE	Model	Case Diam.	Capacity m ³ /hr
591425	RF-12	305mm	3,566
591426	RF-16	105mm	8665

Water Driven Turbine Fans

Designed for high performance ventilation of gas from large enclosed areas or other tank openings, Works effectively providing penetration deep into the tank for complete ventilation, Made of a non-spark construction with a line impeller and integral water motor that are coated against corrosion.



CODE	Outlet Bore Dia. mm	Capacity m ³ /hr	Water Pressure kgf/cm ²	Weight
591436	300	70-220	1-7	24
591437	400	100-290	1-7	28



Pneumatic Diaphragm Pumps

An air operated diaphragm pump designed for simplicity in operation and maintenance. Safety for use in explosive environments



CODE		591601	591602	591603	591604	591606
Suction	Dry	17"	18"	21"	18"	12"
	Wet	31"	28"	31"	31"	30"
Air Inlet NPT		1/4"	1/2"	3/4"	3/4"	3/4"
Waste	Inlet	1"	1-1/2"	2"	3"	4"
	BSP/NPT	Female				flange
	Outlet	3/4"	1-1/4"	2"	3"	4"
	BSP/NPT	Female				Flange
Size	Height	11"	16-7/8"	26-11/32"	32-3/8"	32-1/2"
	Width	10"	14-7/32"	15-29/32"	19-29/32"	37"
	Depth	7-1/4"	11-5/16"	13-1/2"	16-3/4"	13"

Pneumatic Sump Pump

Suitable to empty ballast tanks, bilge wells, etc. in emergency cases often used for draining cargo holds during and after the washing procedure. Required air pressure is 0.59 MPa.



CODE	Capacity		Max. Air Consumption	Water Hose Size	Air Hose Size
	Total Head	Discharge			
591635	15 mtr	22 m ³ /H	2.0 m ³ /min	63.5 mm	3/4
591636	20 mtr	28 m ³ /H	3.4 m ³ /min	63.5 mm	3/4
591637	25 mtr	38 m ³ /H	4.4 m ³ /min	63.5 mm	1

Pneumatic Drum Pump

Capable of pumping and discharging water, Input the liquid in the reverse direction in the chemical production and change oil for the facility in the machinery process.



CODE	Application	Working Pressure	Hose Size	Capacity
591651	Suction & discharge			
	Suction	4kg/cm ²	32mm	100Ltr/min
	discharge	7kg/cm ²	32mm	130Ltr/min

Caution

- 1, When the liquid glutinosity more than 500cps, It's not workable
- 2, Air consumption must be at least 0.5 m3/h. It match 0.4-0.7Mpa air compressor.
- 3, When finishing, Shutting the air supply valve, dragging for the pump, Let is pump discharge the leaving in the hose.
- 4, the liquid can't be inhale when sucking , that's means the drum fulling

Ventilation Tubes Air Ducts



CODE	Tube Diam. mm	Length mtr
591481	200	5
591482	200	10
591483	300	5
591484	300	10
591485	400	5
591486	400	10